

## R-451



### Binary Trigger Valve

#### Features:

- Micro gap construction - snap action and no blow by
- Dual pilots eliminate shuttle valve
- Balanced design allows speed control at exhausts

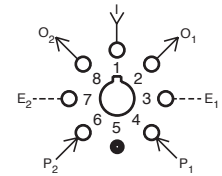
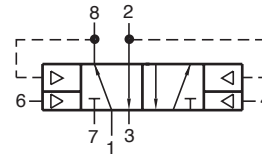
#### Performance:

**Flow:** 9 scfm @ 100 psig; 255 l/min @ 6.9 bars

**Pilot Pressure Minimum:** 40 psig; 2.8 bars

**Temperature:** 32 to 180°F

**Working Pressure:** 0 to 150 psig; 0 to 10.3 bars



#### Description:

R-451 is a special purpose valve designed to work in conjunction with the R-402/R-412 valve to provide a single input flip-flop (binary sub-circuit).

## R-453



### 4-Way Delay Valve

#### Features:

- Micro gap construction - snap action and no blow by
- Screwdriver slot needle adjustment deters tampering
- Balanced design allows speed control at exhausts

#### Performance:

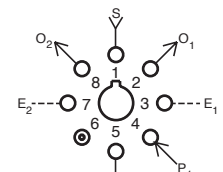
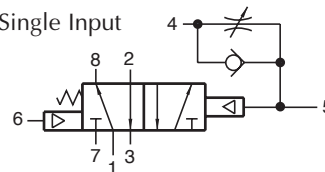
**Flow:** 9 scfm @ 100 psig; 255 l/min @ 6.9 bars

**Pilot Pressure Minimum:** 40 psig; 2.8 bars

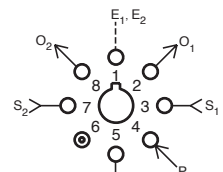
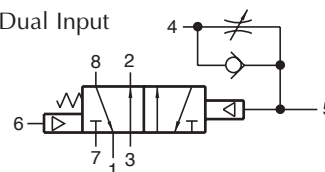
**Temperature:** 32 to 180°F

**Working Pressure:** 0 to 150 psig; 0 to 10.3 bars

#### Single Input



#### Dual Input



#### Description:

R-453 is a 4-way, spring return, fully ported 5 port valve with an adjustable flow control valve interconnected to the pilot. A pilot signal input in port 4 will be delayed in before actuating the valve. When the pilot signal is exhausted, the spring shifts the valve. The R-453 can perform all 2-, 3-, and 4-way functions. The R-453 also features an auxiliary pilot on the spring side of the valve.